

For quotations and bookings
please contact:

BALTIC LINE AS

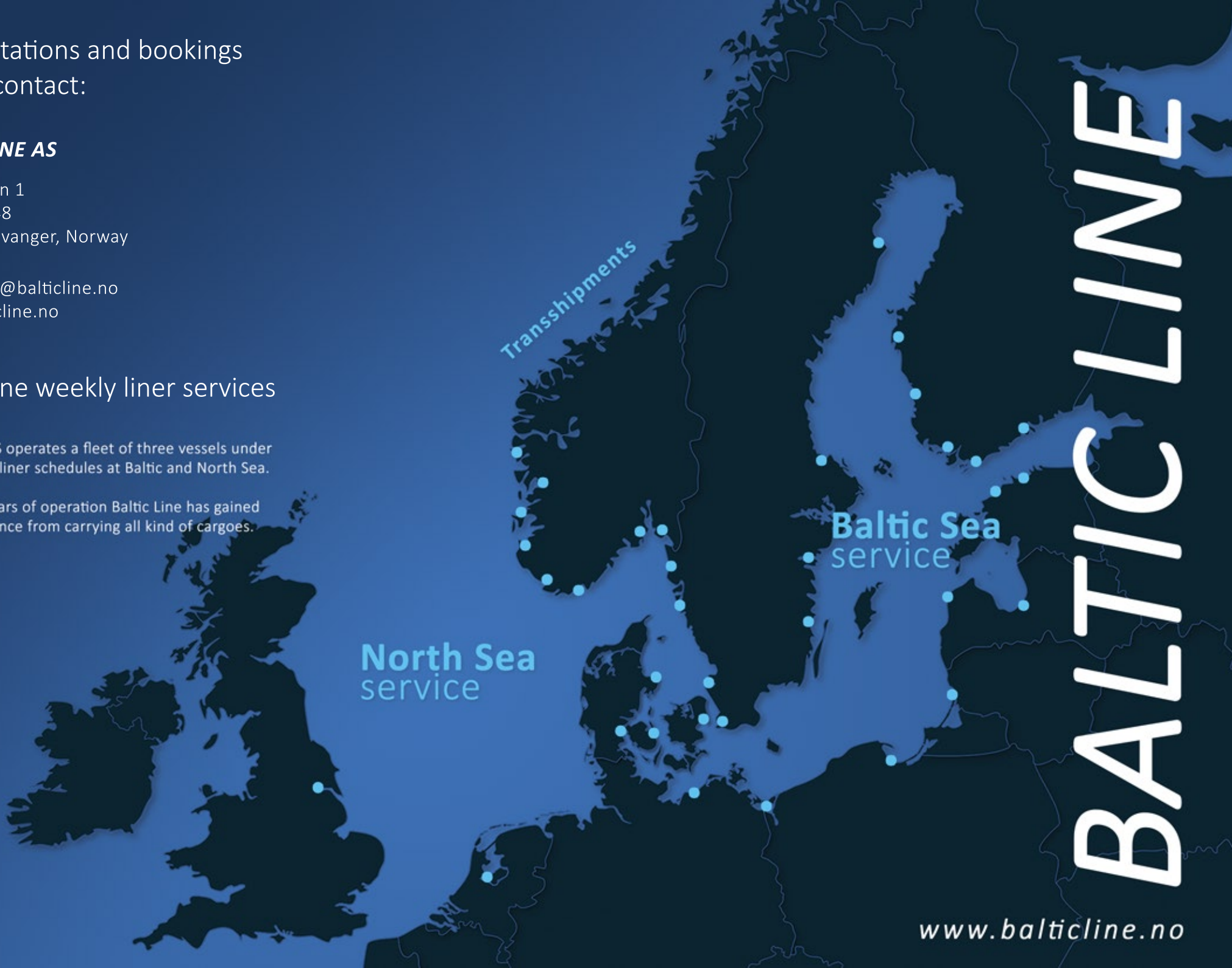
Børehaugen 1
P.O. Box 848
N-4004 Stavanger, Norway

operations@balticline.no
www.balticline.no

Baltic Line weekly liner services

Baltic Line AS operates a fleet of three vessels under fixed weekly liner schedules at Baltic and North Sea.

During 30 years of operation Baltic Line has gained wide experience from carrying all kind of cargoes.



BALTIC LINE

www.balticline.no

The line

Baltic Line is run by Baltic Line AS having headquarters in Stavanger Norway. Baltic Line AS is part of DSD Group established in 1855 (for further information: www.dsd.no).

Baltic Line is sailing at Baltic and North Sea offering weekly sailings by connecting Norwegian ports with regular liner ports in Finland, Baltic States, Poland, Germany, Denmark, Sweden, UK and Netherlands.

The fleet

Baltic Line operates with a fleet of multipurpose conventional vessels with side port lifts, tween decks and hatches.

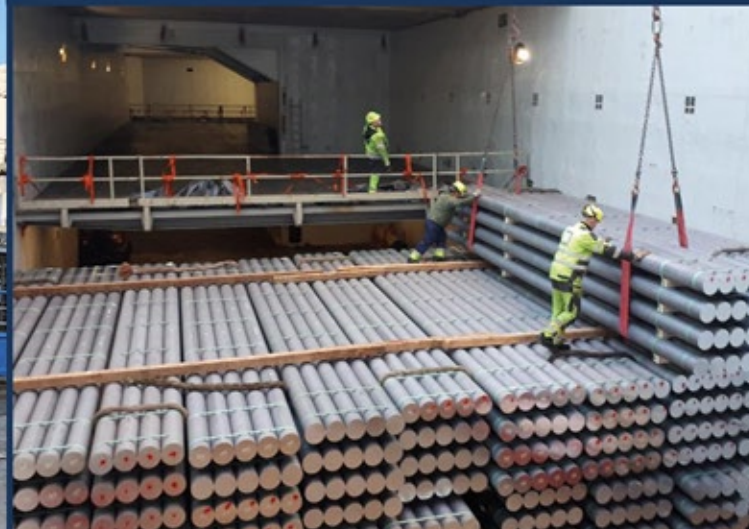
Vessels are equipped by own forklifts and versatile lashing & securing material, also for high and heavy cargoes.

The Cargo

- Steel and metal products
- Forest products
- Chemicals (also hazardous)
- Containers
- Boats
- High and heavy cargoes



Multipurpose operations



Unitized cargo via sideport

Conventional cargoes by crane

Project and deck cargoes